

- LEGEND**
- WATER VALVE
 - FIRE HYDRANT
 - CATCH BASIN
 - SEWER MANHOLE
 - FOUND MONUMENT IN CASE
 - SET REBAR & CAP, LS #19582
 - UTILITY POLE
 - WATER METER
 - EVERGREEN TREE WITH SIZE AND DRIPLINE
 - DECIDUOUS TREE WITH SIZE AND DRIPLINE

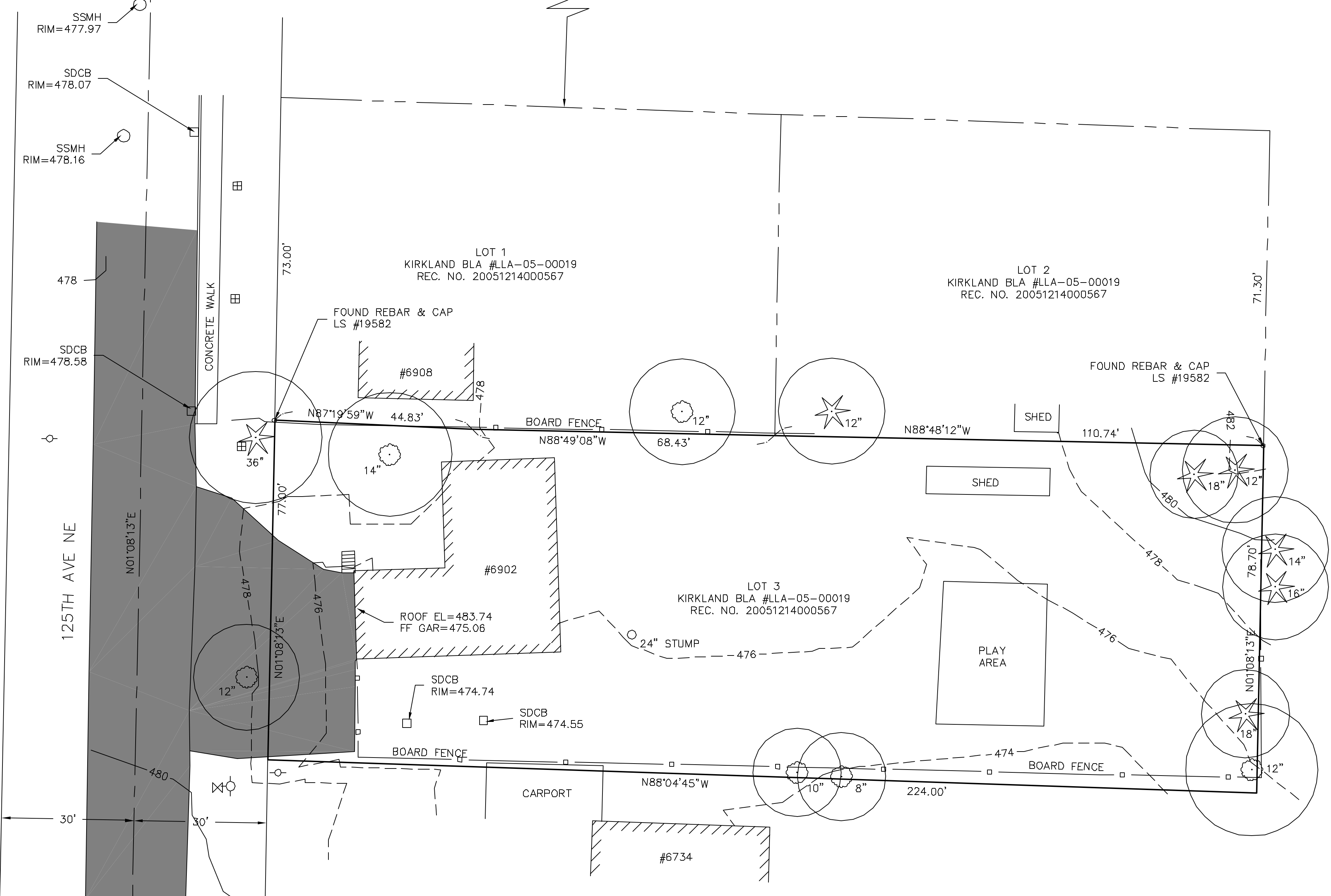
HORIZONTAL DATUM
NAD 1983/91

VERTICAL DATUM
NAVD88

SITE BENCHMARK
CITY OF KIRKLAND CONTROL MONUMENT NO. 20. BRASS CAP IN CASED CONCRETE MONUMENT AT INTERSECTION OF NE 8TH STREET AND 132ND AVENUE NE. ELEVATION = 433.60 NAVD88

LEGAL DESCRIPTION
LOT 3, CITY OF KIRKLAND BOUNDARY LINE ADJUSTMENT NO. LLA-05-00019, AS RECORDED UNDER RECORDING NO. 20051214000567 IN KING COUNTY, WASHINGTON.

- SURVEY NOTES**
1. EASEMENTS, ROADS, RESTRICTIONS, RESERVATIONS, AND HAZARDOUS WASTE DEPOSITS, IF ANY, ARE NOT SHOWN EXCEPT AS INDICATED.
 2. EQUIPMENT AND PROCEDURES USED: TOPCON GTS-3C 5" EDM / CLOSED FIELD TRAVERSE. LAST CALIBRATION JANUARY, 2007.
 3. ALL MONUMENTS VISITED DURING SEPTEMBER, 2007.
 4. THIS SURVEY WAS PREPARED FOR THE EXCLUSIVE USE OF BRIAN THORPE AND DOES NOT EXTEND TO ANY UNNAMED PERSON OR PERSONS WITHOUT EXPRESS RECERTIFICATION BY SURVEYOR NAMING SAID PARTY.
 5. ALL LOCATIONS SHOWN HEREON ARE THOSE OBTAINABLE BY SURFACE EVIDENCE ONLY, UNLESS OTHERWISE NOTED.



SE 1/4 SEC. 9, TWP. 25 N., RING. 5 E., W.M.

	MODAWELL & ASSOCIATES LAND SURVEYORS		TOPOGRAPHIC SURVEY FOR BRIAN THORPE	
	2324 187th AVENUE NORTHEAST REDMOND, WASHINGTON 98052 (425) 649-8718	DWN. BY MD	DATE 10/5/07	JOB NO. 07141
		CHKD. BY JM	SCALE 1" = 20'	SHEET 1 OF 1