



INTERIOR DOOR SCHEDULE

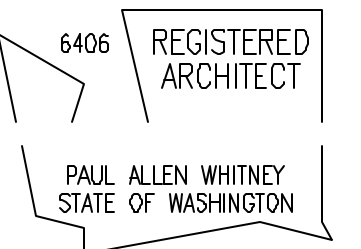
KEY	LOCATION	TYPE	MANUFACTURER #	ROUGH OPENING WIDTH x HEIGHT	HEADER HEIGHT	ELEVATION	JAMB	THRESHOLD	HINGES	NOTES
201	MAIN LEVEL ADU BATH	2'-4"x7'-0"	NOT YET SELECTED	2'-6"x7'-2"	7'-2"	-	2x4 WALL	-	-	
202	MAIN LEVEL ADU BEDROOM	2'-6"x7'-0"	NOT YET SELECTED	2'-8"x7'-2"	7'-2"	-	2x4 WALL	-	-	
203	MAIN LEVEL ADU CLOSET	4'-7"x7'-0" DOUBLE BIFOLD DOOR	NOT YET SELECTED	4'-9"x7'-2"	7'-2"	-	2x4 WALL	-	-	
204	MAIN LEVEL ENTRY CLOSET	2'-6"x7'-0"	NOT YET SELECTED	2'-8"x7'-2"	7'-2"	-	2x4 WALL	-	-	
205	MAIN LEVEL PANTRY/LAUNDRY	2'-8"x7'-0"	NOT YET SELECTED	2'-10"x7'-2"	7'-2"	-	2x4 WALL	-	-	
206	MAIN LEVEL POWDER	2'-4"x7'-0"	NOT YET SELECTED	2'-6"x7'-2"	7'-2"	-	2x4 WALL	-	-	
207	MAIN LEVEL PANTRY/LAUNDRY	2'-6"x7'-0"	NOT YET SELECTED	2'-8"x7'-2"	7'-2"	-	2x6 WALL	-	-	
301	UPPER LEVEL BONUS ROOM	2'-8"x7'-0"	NOT YET SELECTED	2'-10"x7'-2"	7'-2"	-	2x4 WALL	-	-	
302	MAIN LEVEL BATH	2'-8"x7'-0"	NOT YET SELECTED	2'-10"x7'-2"	7'-2"	-	2x4 WALL	-	-	
303	MAIN LEVEL BATH	2'-4"x7'-0"	NOT YET SELECTED	2'-6"x7'-2"	7'-2"	-	2x4 WALL	-	-	
304	UPPER LEVEL MASTER	5'-0"x7'-0" DOUBLE DOORS	NOT YET SELECTED	5'-2"x7'-2"	7'-2"	-	2x4 WALL	-	-	
305	UPPER LEVEL MASTER BATH	2'-4"x7'-0"	NOT YET SELECTED	2'-6"x7'-2"	7'-2"	-	2x4 WALL	-	-	
306	UPPER LEVEL MASTER TOILET	2'-4"x7'-0"	NOT YET SELECTED	2'-6"x7'-2"	7'-2"	-	2x4 WALL	-	-	
307	UPPER LEVEL MASTER CLOSET	2'-4"x7'-0"	NOT YET SELECTED	2'-6"x7'-2"	7'-2"	-	2x4 WALL	-	-	
308	UPPER LEVEL MASTER CLOSET	2'-4"x7'-0"	NOT YET SELECTED	2'-6"x7'-2"	7'-2"	-	2x4 WALL	-	-	
309	UPPER LEVEL BEDROOM #2	2'-6"x7'-0"	NOT YET SELECTED	2'-8"x7'-2"	7'-2"	-	2x4 WALL	-	-	
310	UPPER LEVEL BEDROOM CLOSET	2'-4"x7'-0"	NOT YET SELECTED	2'-6"x7'-2"	7'-2"	-	2x4 WALL	-	-	
311	UPPER LEVEL BATHROOM	2'-4"x7'-0"	NOT YET SELECTED	2'-6"x7'-2"	7'-2"	-	2x4 WALL	-	-	
312	UPPER LEVEL BATHROOM	2'-4"x7'-0"	NOT YET SELECTED	2'-6"x7'-2"	7'-2"	-	2x4 WALL	-	-	
313	UPPER LEVEL BEDROOM CLOSET	2'-4"x7'-0"	NOT YET SELECTED	2'-6"x7'-2"	7'-2"	-	2x4 WALL	-	-	
314	UPPER LEVEL BEDROOM #1	2'-6"x7'-0"	NOT YET SELECTED	2'-8"x7'-2"	7'-2"	-	2x4 WALL	-	-	

1827 BALLARD WAY SEATTLE WA 98107
WHITNEYARCHITECTURE.COM
206.789.3936 FAX.789.1871

PROJECT:

Thorpe
Residence

1 A New Single-Family Residence
6004 126th Avenue Northeast
Kirkland, WA 98033



DATE ISSUED:

12/19/2007 PERMIT SE

DATE REVISED:

03/20/2008 1 CORRECTIONS

FILENAME & LOCATION:

0723-A2-SCHEDULES.dwg
Z:\DATA\DRAWINGS\WHITNEY\Thorpe\A2 - plans & schedules\

PLOTTED:

25 March 2008 at 1:24 pm

SHEET TITLE:

Permit Documents
Interior Door
Schedule

SHEET NUMBER:

A2.06

SHEET OF

COPYRIGHT 2007-2008
P.A. WHITNEY ARCHITECTURE Inc.