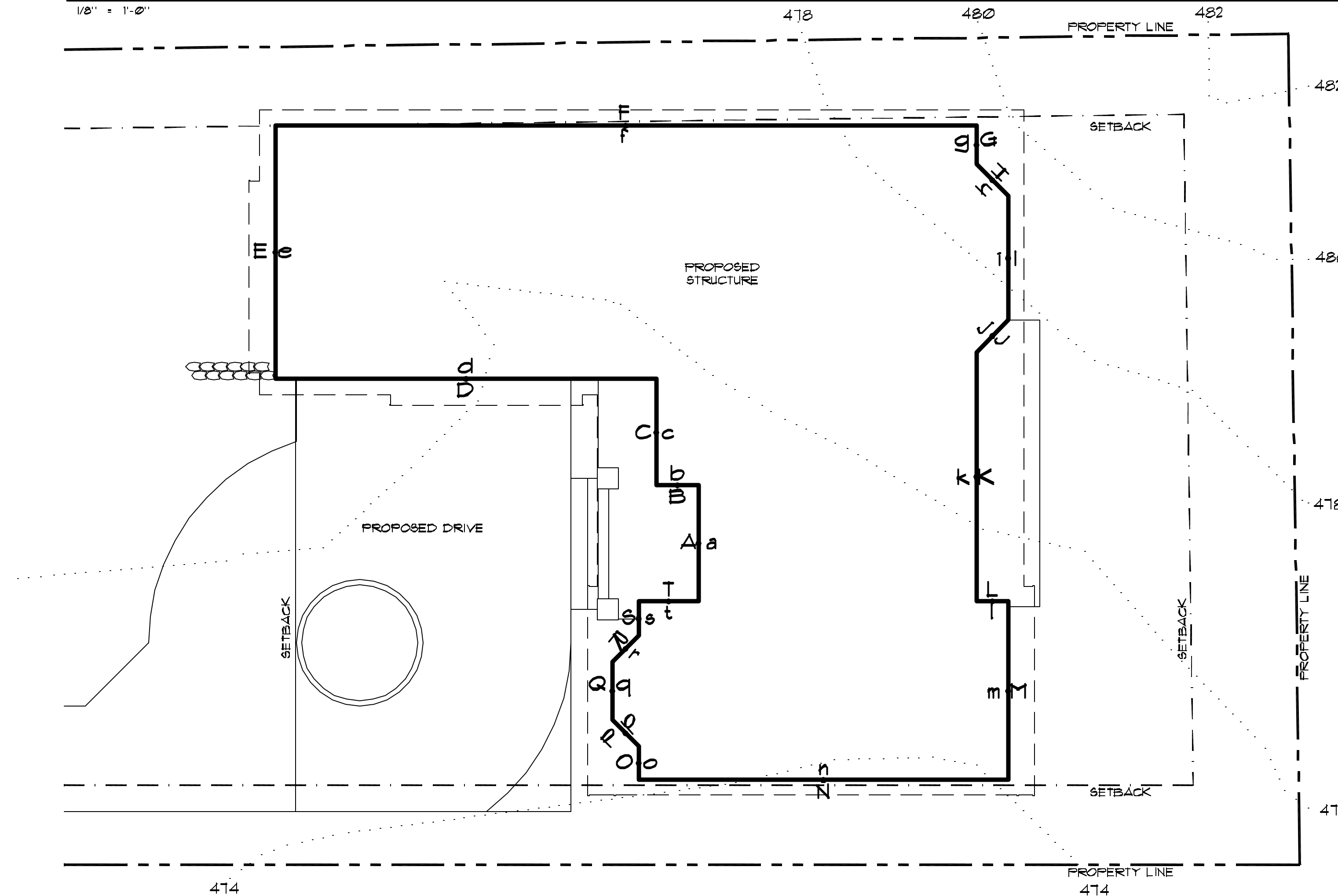


ABE CALCULATION PLAN

1/8" = 1'-0"



MIDPOINT ELEVATION	WALL LENGTH
A = 415.2'	a = 11.0'
B = 415.5'	b = 4.0'
C = 415.1'	c = 10.1'
D = 416.0'	d = 36.1'
E = 416.9'	e = 24.0'
F = 411.9'	f = 66.4'
G = 419.9'	g = 36.4'
H = 419.4'	h = 4.3'
I = 418.4'	i = 11.8'
J = 411.6'	j = 4.3'
K = 416.4'	k = 23.1'
L = 415.4'	l = 3.0'
M = 414.1'	m = 11.2'
N = 414.0'	n = 35.0'
O = 414.1'	o = 3.2'
P = 414.3'	p = 3.5'
Q = 414.5'	q = 5.5'
R = 414.1'	r = 3.5'
S = 414.8'	s = 3.2'
T = 414.9'	t = 5.1'
	total = 270.9'

ABE = 132832.6/270.9 = 476.3 ABE



1837 BALLARD WAY SEATTLE WA 98107  
WHITNEYARCHITECTURE.COM  
206.789.3934 FAX.789.1871

PROJECT:

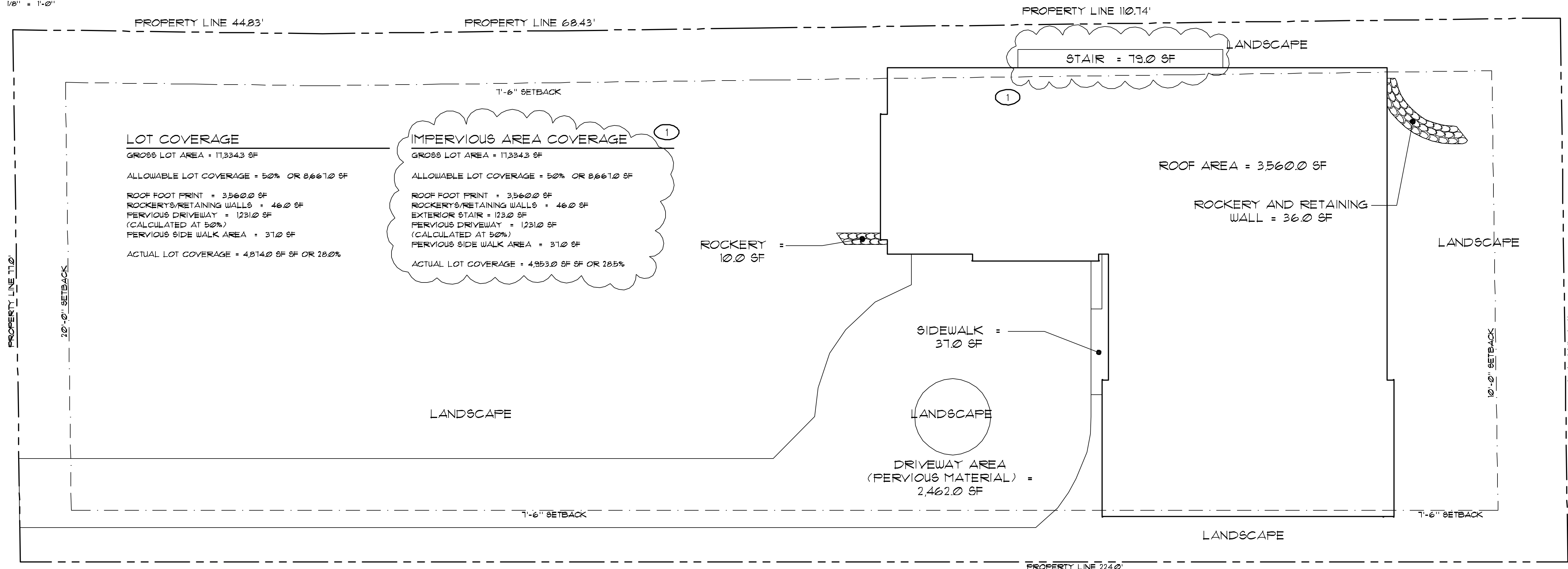
Thorpe Residence

A New Single-Family Residence  
6004 125th Avenue Northeast  
Kirkland, WA 98033



IMPERVIOUS AREA / LOT COVERAGE CALCULATION PLAN

1/8" = 1'-0"



DATE ISSUED:

12/19/2007

PERMIT SET

DATE REVISED:

03/20/2008

1

CORRECTIONS

FILENAME & LOCATION:

A1.01.dwg  
Z:\DATA\DRAWINGS\WHITNEY\Thorpe\A1 - site & demolition plans\

PLOTTED:

25 March 2008 at 1:08 pm

SHEET TITLE:

Permit Documents

General Info  
Plans

SHEET NUMBER:

A1.03

SHEET OF

COPYRIGHT 2007-2008  
P.A. WHITNEY ARCHITECTURE Inc.