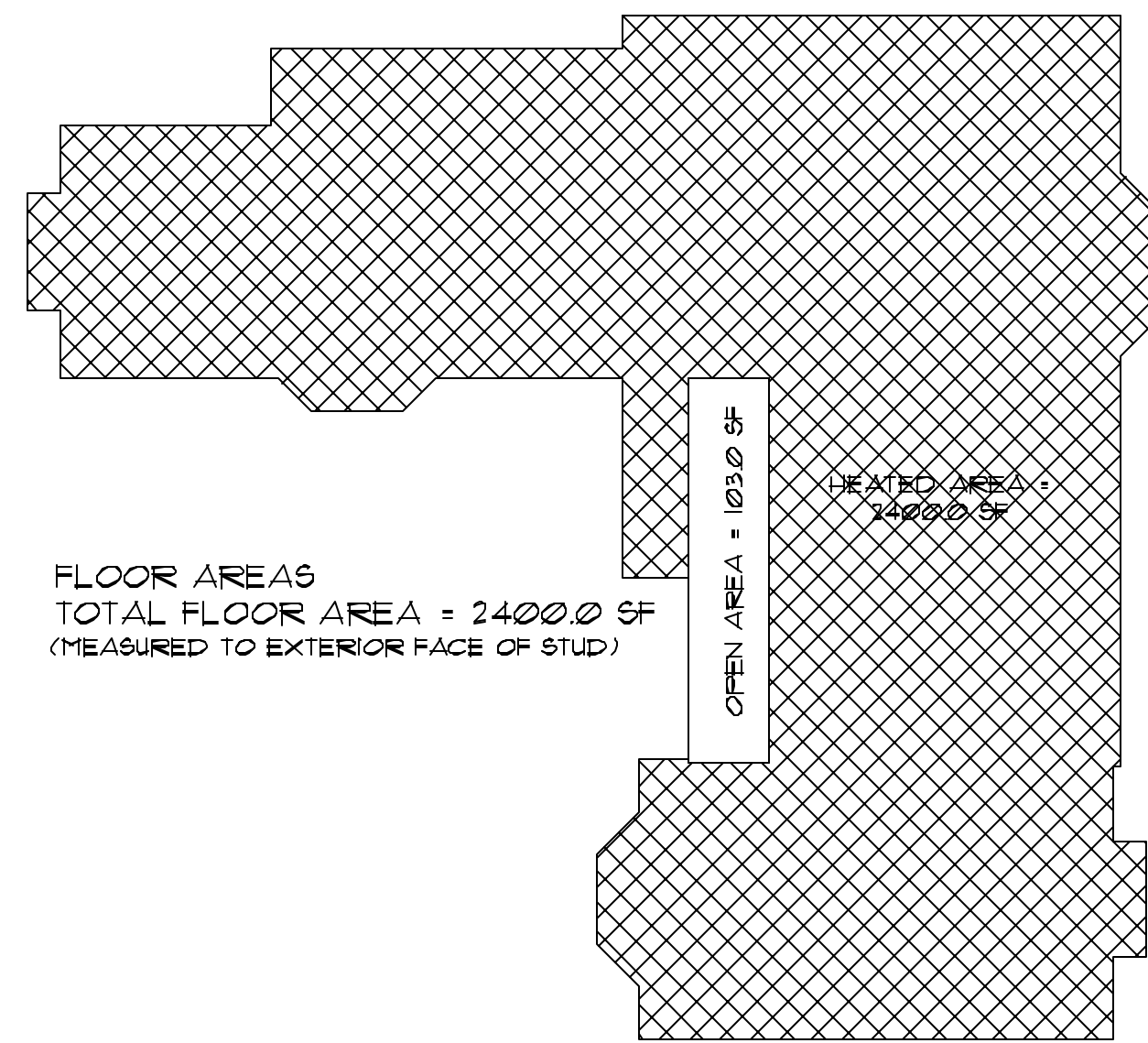


**FLOOR AREA CALCULATION PLAN**

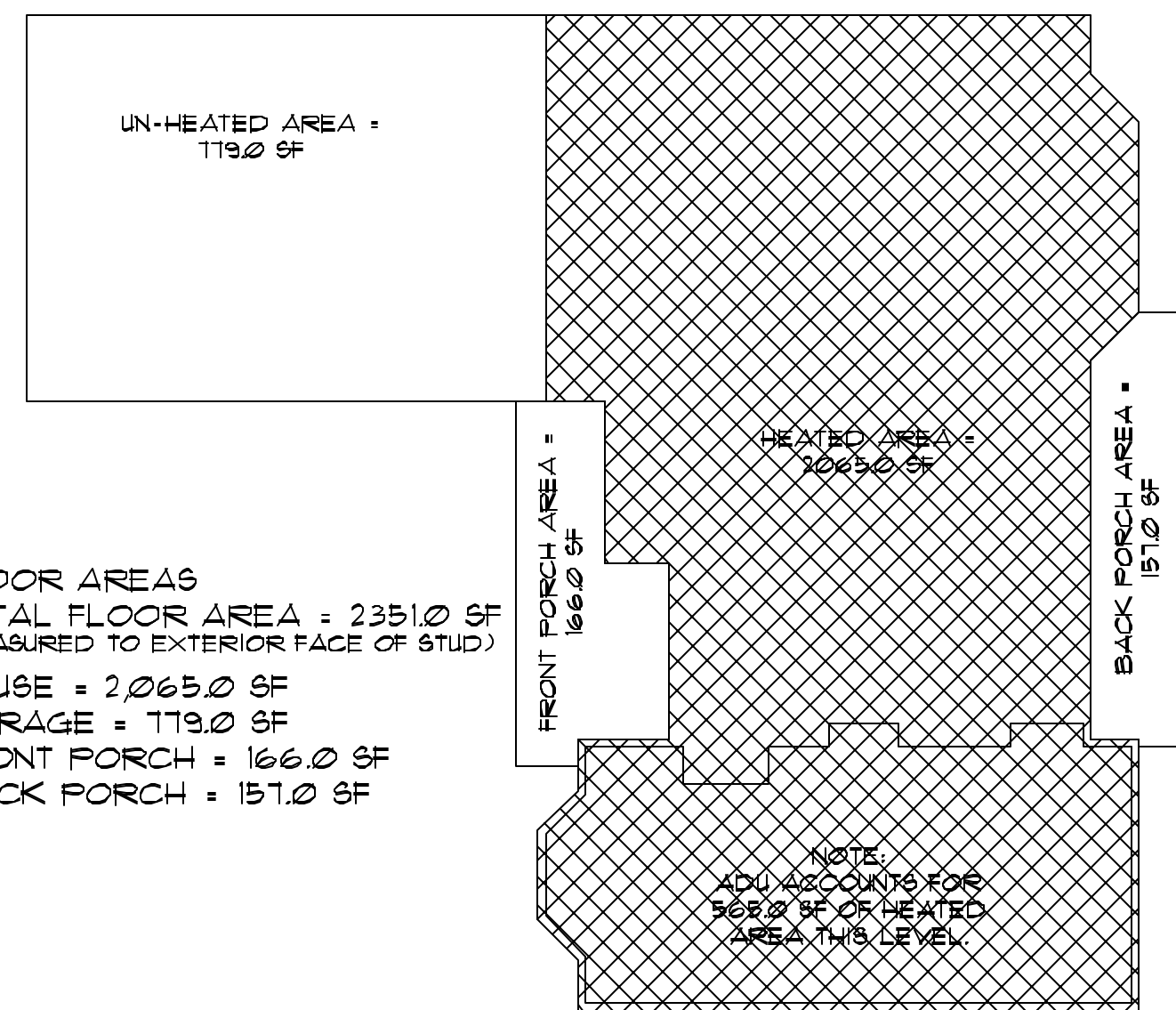
3/32" = 1'-0"

HEATED FLOOR AREA



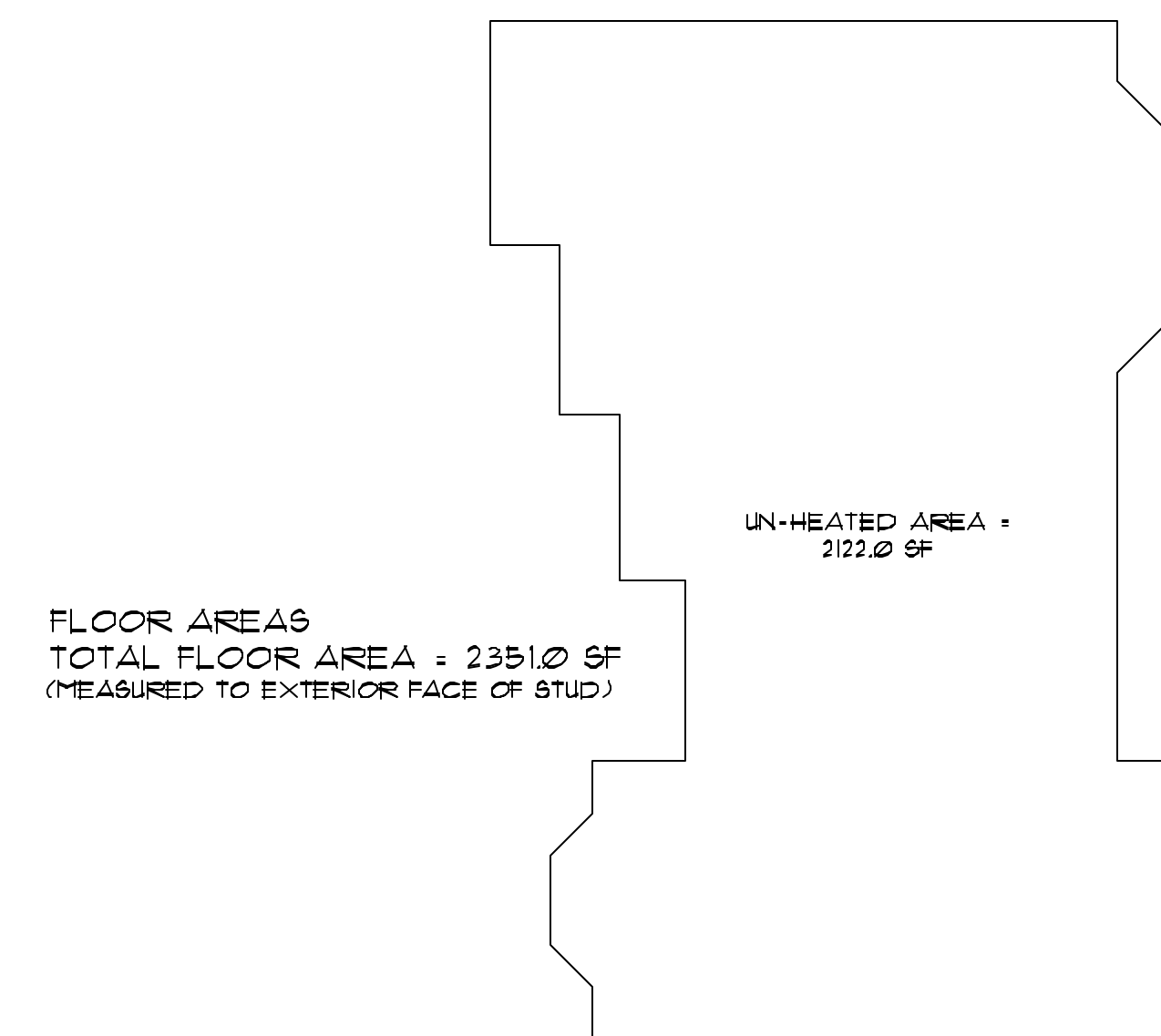
FLOOR AREAS  
TOTAL FLOOR AREA = 24000 SF  
(MEASURED TO EXTERIOR FACE OF STUD)

UPPER LEVEL



FLOOR AREAS  
TOTAL FLOOR AREA = 23510 SF  
(MEASURED TO EXTERIOR FACE OF STUD)  
HOUSE = 20650 SF  
GARAGE = 1190 SF  
FRONT PORCH = 166 SF  
BACK PORCH = 1510 SF

MAIN LEVEL



FLOOR AREAS  
TOTAL FLOOR AREA = 23510 SF  
(MEASURED TO EXTERIOR FACE OF STUD)

LOWER LEVEL

**SQUARE FOOTAGE**

MEASURED TO EXTERIOR  
(SEE FLOOR AREA CALCULATION PLANS A1.02)

LOWER LEVEL  
UN-HEATED BASEMENT AREA = 2120 SF  
GROSS HEATED FLOOR AREA = 0 SF

MAIN LEVEL  
HEATED FLOOR AREA = 20650 SF  
UN-HEATED GARAGE AREA = 1190 SF  
FRONT PORCH AREA = 166 SF  
BACK PORCH AREA = 1510 SF  
GROSS HEATED FLOOR AREA THIS LEVEL = 20650 SF

UPPER LEVEL  
HEATED FLOOR AREA = 24000 SF  
GROSS HEATED FLOOR AREA THIS LEVEL = 24000 SF

**FLOOR AREA RATIO PLAN**

3/32" = 1'-0"

INCLUDED FLOOR AREA

**FLOOR AREA RATIO CALCULATION**

MEASURED TO INTERIOR OF WALL  
(SEE FLOOR AREA CALCULATION PLANS A1.02)

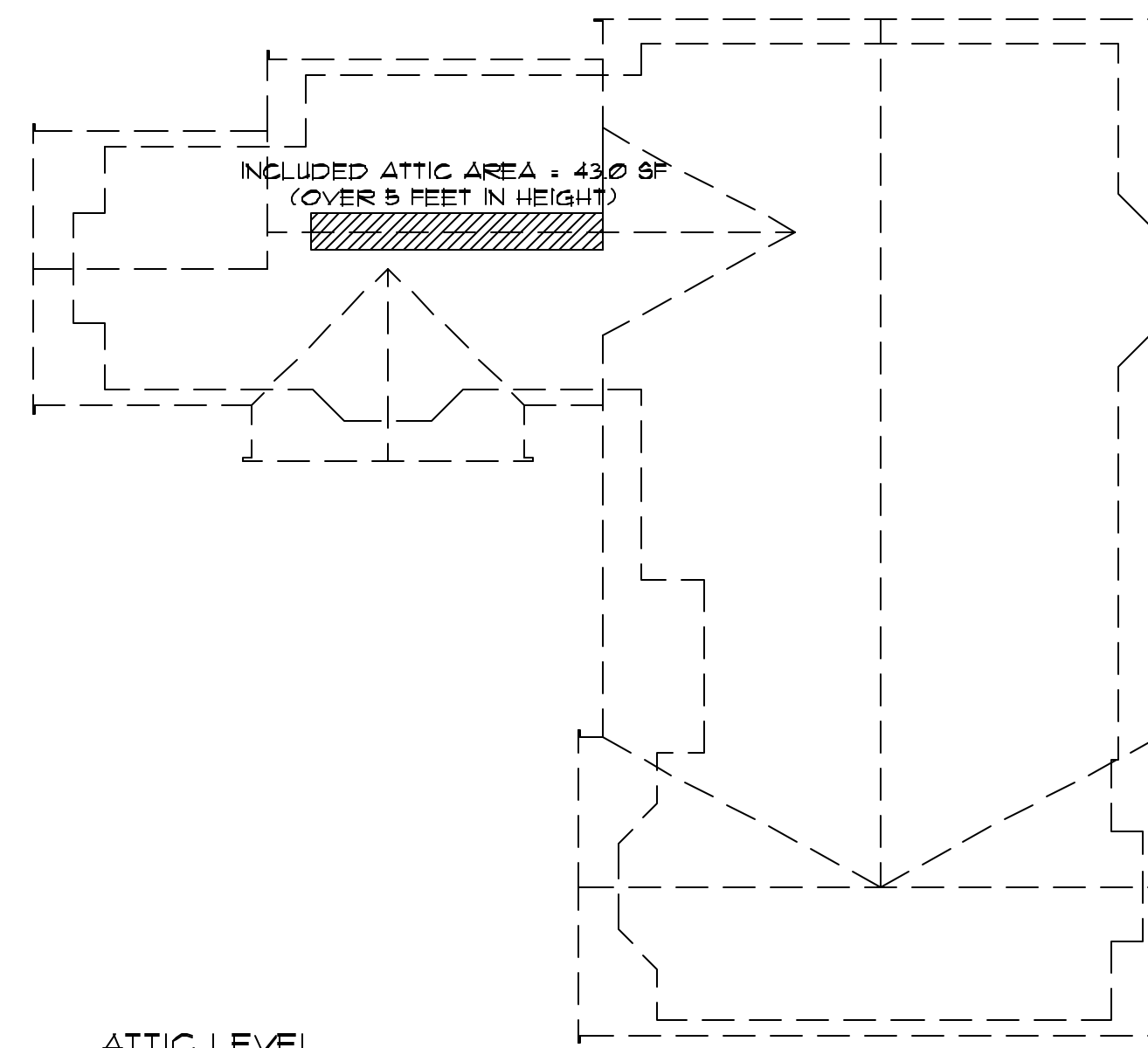
LOWER LEVEL  
EXCLUDED BASEMENT AREA = 1916 SF  
INCLUDED AREA THIS LEVEL = 0 SF

MAIN LEVEL  
INCLUDED FLOOR AREA = 19600 SF  
INCLUDED GARAGE AREA = 3695 SF  
EXCLUDED GARAGE AREA = 3655 SF  
INCLUDED AREA THIS LEVEL = 23290 SF

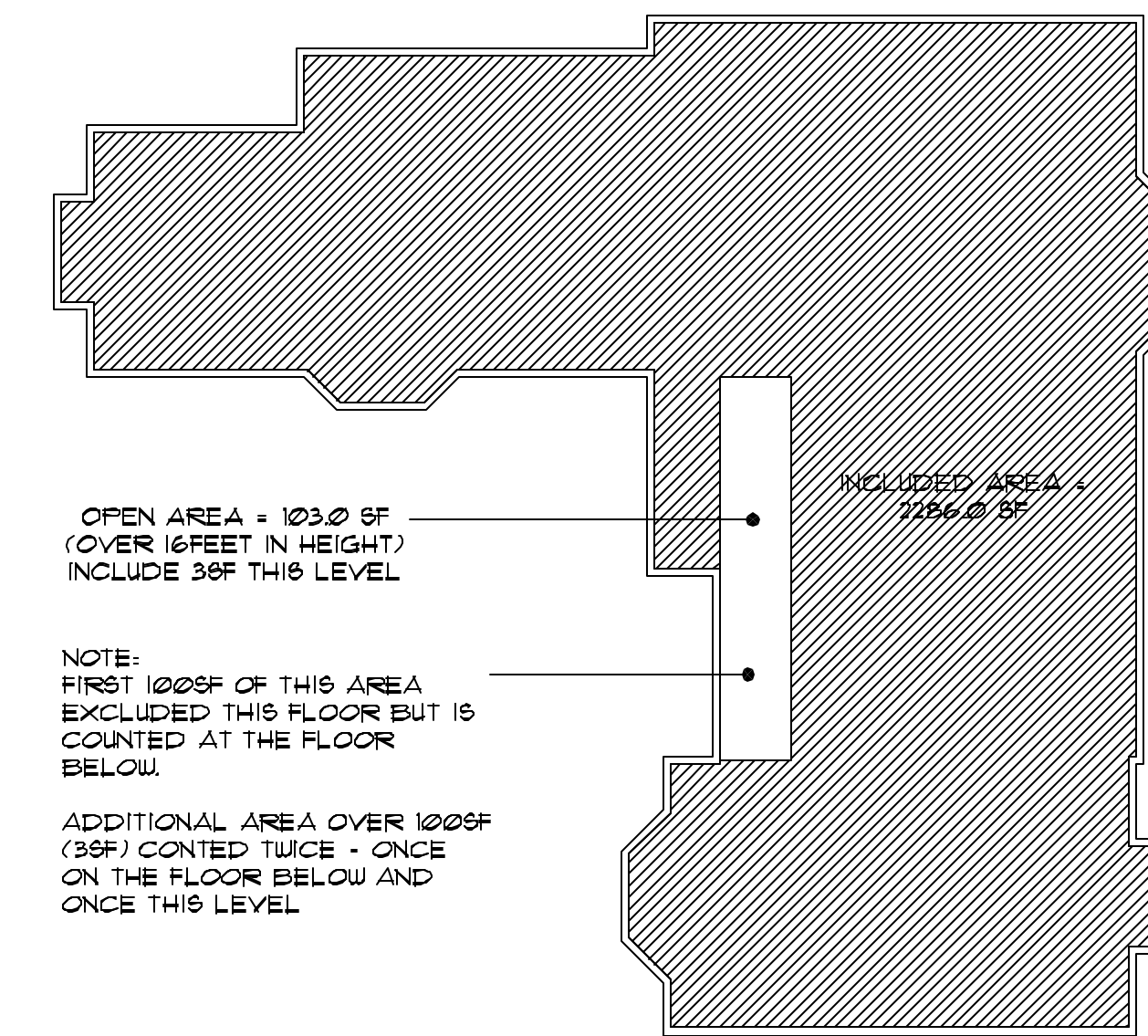
UPPER LEVEL  
INCLUDED FLOOR AREA = 22800 SF  
INCLUDED FLOOR AREA + OPEN AREA = 30 SF  
INCLUDED AREA THIS LEVEL = 22830 SF

ATTIC LEVEL  
INCLUDED AREA (W/ HEAD HEIGHT OVER 5 FEET) = 430 SF  
INCLUDED AREA THIS LEVEL = 430 SF

TOTAL INCLUDED FLOOR AREA = 46695  
OR 46695 / 113243 = 27% FAR



ATTIC LEVEL

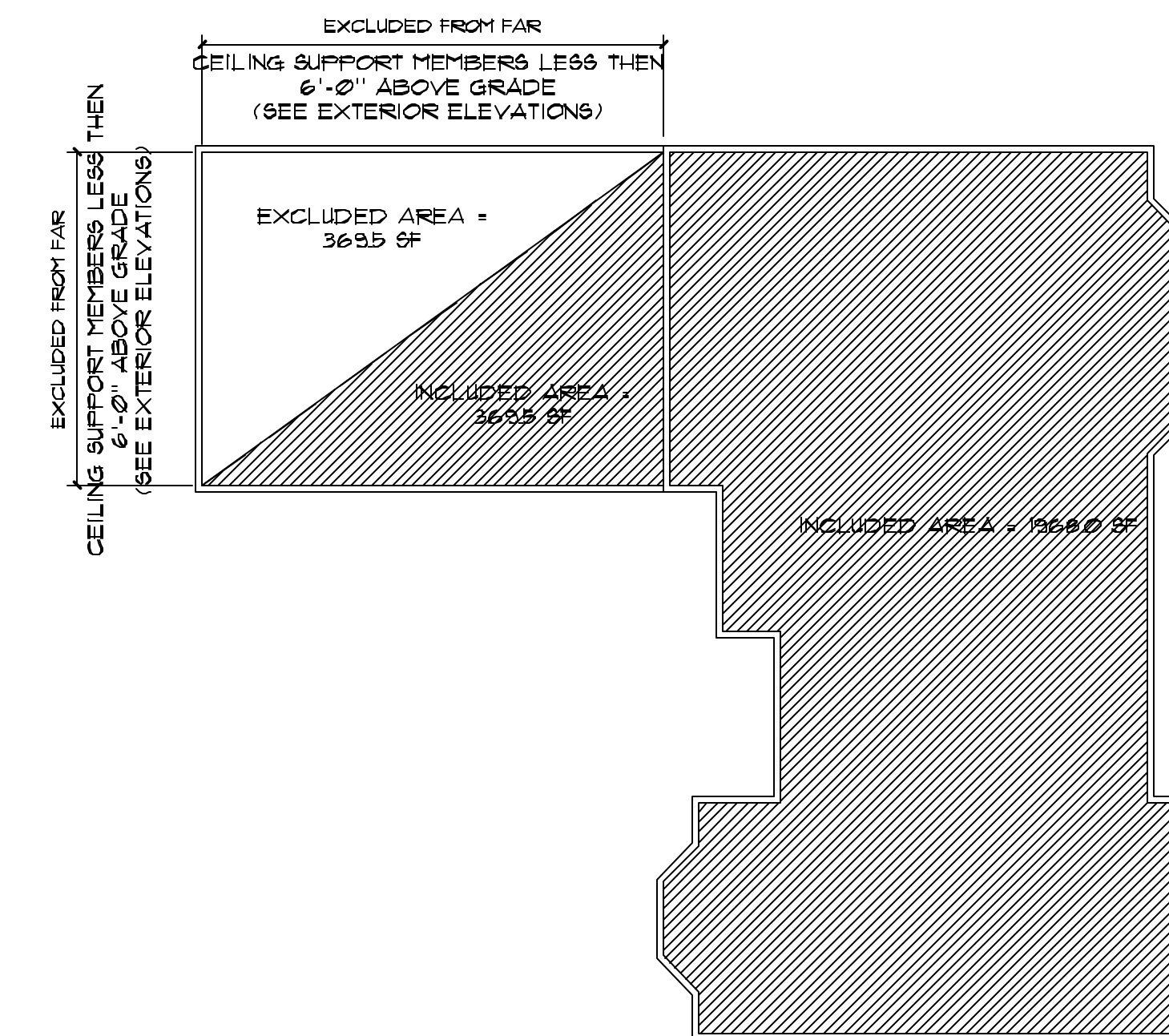


OPEN AREA = 1030 SF  
(OVER 16 FEET IN HEIGHT)  
INCLUDE 30 SF THIS LEVEL

NOTE:  
FIRST 100 SF OF THIS AREA  
EXCLUDED THIS FLOOR BUT IS  
COUNTED AT THE FLOOR  
BELOW.

ADDITIONAL AREA OVER 100 SF  
(30 SF) COUNTED TWICE - ONCE  
ON THE FLOOR BELOW AND  
ONCE THIS LEVEL

UPPER LEVEL



EXCLUDED FROM FAR  
CEILING SUPPORT MEMBERS LESS THEN  
6'-0" ABOVE GRADE  
(SEE EXTERIOR ELEVATIONS)

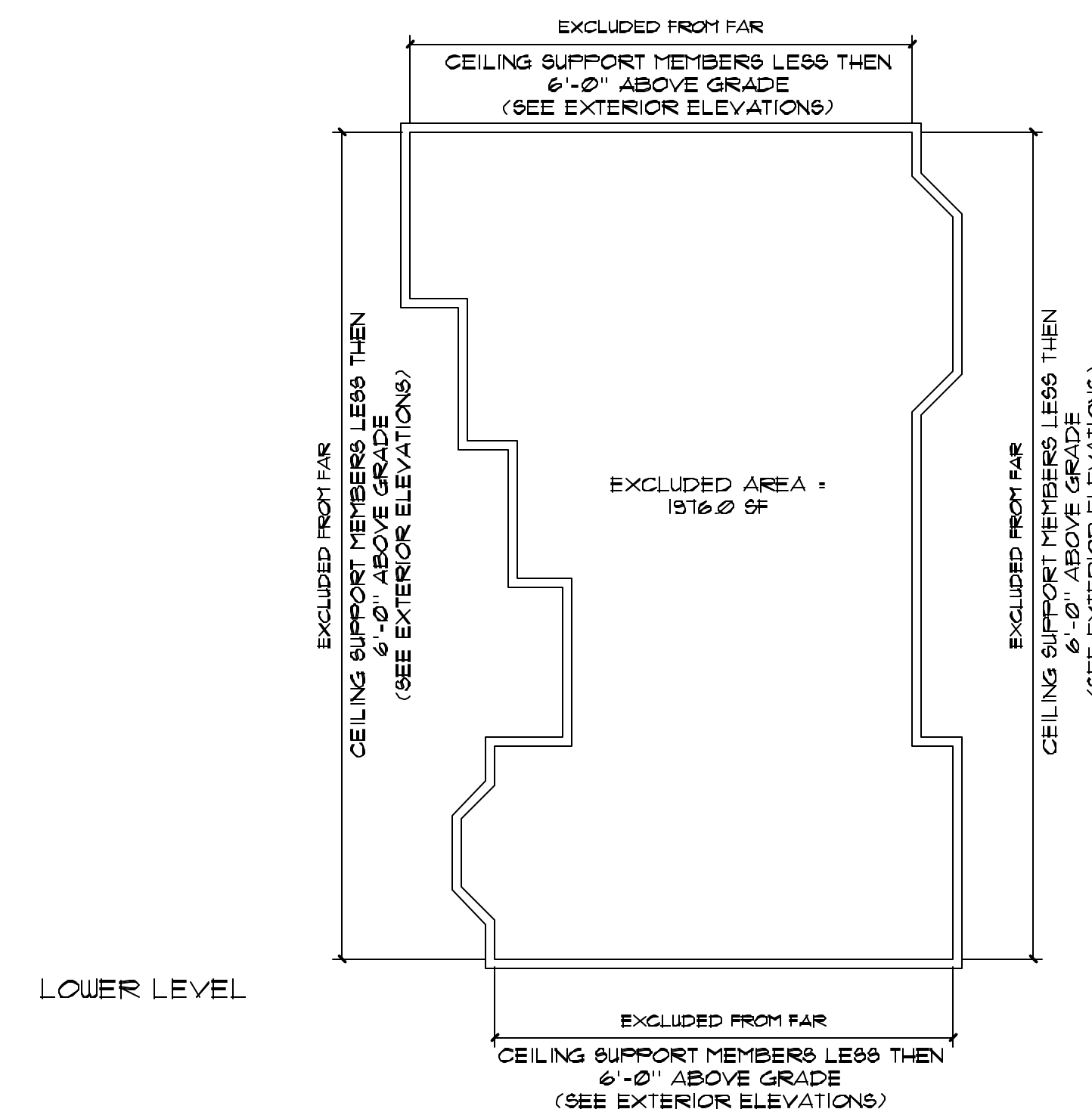
EXCLUDED FROM FAR  
CEILING SUPPORT MEMBERS LESS THEN  
6'-0" ABOVE GRADE  
(SEE EXTERIOR ELEVATIONS)

EXCLUDED AREA =  
3695 SF

INCLUDED AREA =  
3695 SF

INCLUDED AREA = 19600 SF

MAIN LEVEL



EXCLUDED FROM FAR  
CEILING SUPPORT MEMBERS LESS THEN  
6'-0" ABOVE GRADE  
(SEE EXTERIOR ELEVATIONS)

EXCLUDED FROM FAR  
CEILING SUPPORT MEMBERS LESS THEN  
6'-0" ABOVE GRADE  
(SEE EXTERIOR ELEVATIONS)

EXCLUDED AREA =  
1916 SF

EXCLUDED FROM FAR  
CEILING SUPPORT MEMBERS LESS THEN  
6'-0" ABOVE GRADE  
(SEE EXTERIOR ELEVATIONS)

LOWER LEVEL



1837 BALLARD WAY SEATTLE WA 98107  
WHITNEYARCHITECTURE.COM  
206.789.3934 FAX.789.1871

PROJECT:

**Thorpe  
Residence**

1 A New Single-Family Residence  
6004 125th Avenue Northeast  
Kirkland, WA 98033



DATE ISSUED:

12/19/2007

PERMIT SET

DATE REVISED:

03/20/2008

1

CORRECTIONS

FILENAME & LOCATION:

A1.01.dwg  
Z:\DATA\DRAWINGS\WHITNEY\Thorpe\A1 - site & demolition plans\

PLOTTED:

25 March 2008 at 1:08 pm

SHEET TITLE:

Permit Documents

General Info  
Plans

SHEET NUMBER:

**A1.02**

SHEET OF

COPYRIGHT 2007-2008  
P.A. WHITNEY ARCHITECTURE Inc.